

BASS CLEF INSTRUMENT CHORD/SCALE PROGRESSIONS

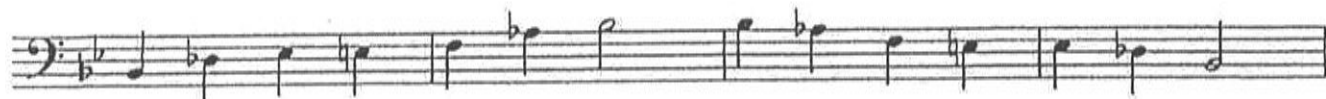
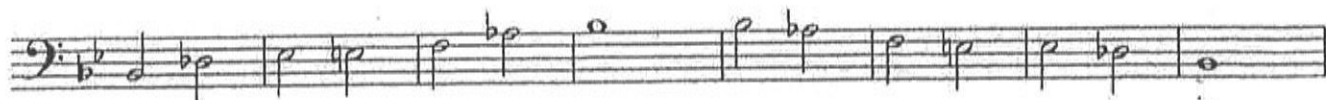
1. ii/V7/I All Major Keys

Handwritten musical notation for bass clef instrument chord/scale progressions in 12 major keys. Each staff shows a sequence of chords and scales for the ii/V7/I progression. The keys and their corresponding chords are:

- D- G7 C
- C- F7 Bb
- Bb Eb Ab
- A D7 Gb
- F# (Gb) B7 E
- E A7 D
- Eb Ab Db
- C# (Cb) F#7 B
- B E7 A
- A D7 G
- G- C7 F
- F- Bb7 Eb

Blues Scales - B.C. Instruments

Concert Bb Blues Scale



Concert Bb

Concert Eb



Concert F

Concert C



Concert D

Concert G



Concert Ab

Concert A



Bass

Lunar

TRACK 19

Jim Snidero

$\text{♩} = 77$

[CHORUS 1]

C-Δ G-7 C7 alt.

5 FΔ F-7 Bb7 alt.

9 EbΔ Eb-7 Ab7 DbΔ Dø G7 alt.

[CHORUS 2]

13 C-Δ G-7 C7 alt.

17 FΔ A F-7 Bb7

21 EbΔ Eb-7 Ab7 DbΔ Dø G7 alt.

[CHORUS 3]

25 C-Δ G-7 C7

29 FΔ A F-7 Bb7 alt.

The image shows a bass line for the track 'Lunar'. It consists of three choruses of music. The first chorus (measures 1-8) starts with a C-Δ chord and features eighth-note patterns with triplets. The second chorus (measures 9-16) continues with similar patterns and includes chords like EbΔ, Eb-7, Ab7, DbΔ, Dø, and G7 alt. The third chorus (measures 17-24) follows a similar structure with chords like FΔ, A, F-7, and Bb7. The fourth chorus (measures 25-32) starts with C-Δ and includes chords like G-7, C7, FΔ, A, F-7, and Bb7 alt. The notation includes various chord symbols, accidentals, and rhythmic markings such as slurs and triplets.



TRACK 8 BLUES IN KEY OF F CONCERT (Play 12 Times)

F Blues Scale

F Minor Pentatonic Scale

Think of the blues progression as being three 4-bar phrases: A beginning, a middle, an end.

TRACK 9 CYCLE OF DOMINANT 7TH CHORDS (Play 2 Times)