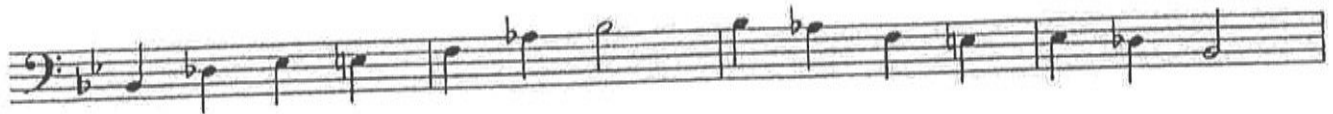
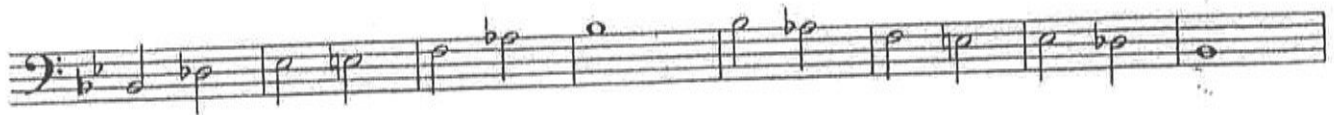


# Blues Scales - B.C. Instruments

Concert Bb Blues Scale



Concert Bb

Concert Eb



Concert F

Concert C



Concert D

Concert G



Concert Ab

Concert A



Trombone

Lunar  
TRACK 19

Jim Snidero

$\text{♩} = 77$   
[CHORUS 1]  
C-Δ G-7 C7 alt.

FΔ F-7 Bb7 alt.

EbΔ opt. 8va Eb-7 Ab7 DbΔ Dø G7 alt.

[CHORUS 2]  
C-Δ G-7 C7 alt.

FΔ F-7 opt. 8va Bb7

(8va) EbΔ Eb-7 Ab7 DbΔ Dø G7 alt.

[CHORUS 3]  
C-Δ G-7 C7

FΔ F-7 Bb7 alt. opt. 8va



# TRACK 8 BLUES IN KEY OF F CONCERT (Play 12 Times)

F7 Bb7 F7 F7  
Bb7 Bb7 F7 F7  
G C7 F7 C7 F7  
(G- C7) fine

F Blues Scale

F Minor Pentatonic Scale

Think of the blues progression as being three 4-bar phrases: A beginning, a middle, an end.

# TRACK 9 CYCLE OF DOMINANT 7TH CHORDS (Play 2 Times)

C7 F7 Bb7 Eb7  
Ab7 Db7 Gb7 B7  
E7 A7 D7 G7 CΔ  
fine